

Zenith® Fenestrated

AAA ENDOVASCULAR GRAFT

PHYSICIAN DICTATION NOTES

Date: _____ Hospital: _____

Physician: _____ Attending physician: _____

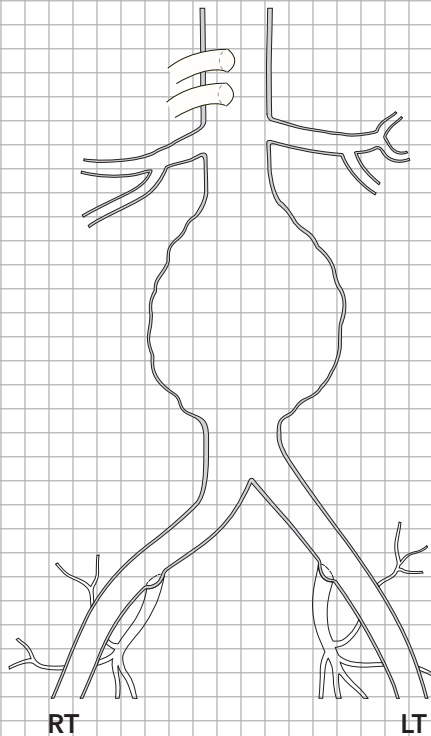
Patient ID: _____ Time of procedure: _____ Fluoroscopy time: _____ Total contrast: _____ Ipsilateral: RT LT

Devices used

Proximal body graft: _____ Additional devices: _____

Distal body graft: _____

Contralateral iliac leg: _____



Comments:

Coding information*

- 34839** Physician planning of a patient-specific fenestrated visceral aortic endograft requiring a minimum of 90 minutes of physician time
- 34845** Endovascular repair of visceral aorta and infrarenal abdominal aorta (eg, aneurysm, pseudoaneurysm, dissection, penetrating ulcer, intramural hematoma, or traumatic disruption) with a fenestrated visceral aortic endograft and concomitant unibody or modular infrarenal aortic endograft and all associated radiological supervision and interpretation, including target zone angioplasty, when performed; including one visceral artery endoprosthesis (superior mesenteric, celiac or renal artery)
- 34846** Endovascular repair of visceral aorta and infrarenal abdominal aorta (eg, aneurysm, pseudoaneurysm, dissection, penetrating ulcer, intramural hematoma, or traumatic disruption) with a fenestrated visceral aortic endograft and concomitant unibody or modular infrarenal aortic endograft and all associated radiological supervision and interpretation, including target zone angioplasty, when performed; including two visceral artery endoprostheses (superior mesenteric, celiac and/or renal artery[s])
- 34847** Endovascular repair of visceral aorta and infrarenal abdominal aorta (eg, aneurysm, pseudoaneurysm, dissection, penetrating ulcer, intramural hematoma, or traumatic disruption) with a fenestrated visceral aortic endograft and concomitant unibody or modular infrarenal aortic endograft and all associated radiological supervision and interpretation, including target zone angioplasty, when performed; including three visceral artery endoprostheses (superior mesenteric, celiac and/or renal artery[s])
- 34848** Endovascular repair of visceral aorta and infrarenal abdominal aorta (eg, aneurysm, pseudoaneurysm, dissection, penetrating ulcer, intramural hematoma, or traumatic disruption) with a fenestrated visceral aortic endograft and concomitant unibody or modular infrarenal aortic endograft and all associated radiological supervision and interpretation, including target zone angioplasty, when performed; including four or more visceral artery endoprostheses (superior mesenteric, celiac and/or renal artery[s])
- +34709** Placement of extension prosthesis(es) distal to the common iliac artery(ies) or proximal to the renal artery(ies) for endovascular repair of infrarenal abdominal aortic or iliac aneurysm, false aneurysm, dissection, penetrating ulcer, including pre-procedure sizing and device selection, all nonselective catheterization(s), all associated radiological supervision and interpretation, and treatment zone angioplasty/stenting, when performed, per vessel treated (**34709 may only be reported once per vessel treated [ie, multiple endograft extensions placed in a single vessel may only be reported once]**)
- +34713** Percutaneous access and closure of femoral artery for delivery of endograft through a large sheath (12French or larger), including ultrasound guidance, when performed, unilateral (**34713 may only be reported once per side. For bilateral procedure, report 34713 twice**) (Do not report ultrasound guidance [ie, 76937] for percutaneous vascular access in conjunction with 34713 for the same access)
- +34812** Open femoral artery exposure for delivery of endovascular prosthesis, by groin incision, unilateral (**34812 may only be reported once per side. For bilateral procedure, report 34812 twice**)
- +34714** Open femoral artery exposure with creation of conduit for delivery of endovascular prosthesis or for establishment of cardiopulmonary bypass, by groin incision, unilateral (**34714 may only be reported once per side. For bilateral procedure, report 34714 twice**)
- +34820** Open iliac artery exposure for delivery of endovascular prosthesis or iliac occlusion during endovascular therapy, by abdominal or retroperitoneal incision, unilateral (**34820 may only be reported once per side. For bilateral procedure, report 34820 twice**)
- +34833** Open iliac artery exposure with creation of conduit for delivery of endovascular prosthesis or for establishment of cardiopulmonary bypass, by abdominal or retroperitoneal incision, unilateral (**34833 may only be reported once per side. For bilateral procedure, report 34833 twice**)
- +34834** Open brachial artery exposure for delivery of endovascular prosthesis, unilateral (**34834 may only be reported once per side. For bilateral procedure, report 34834 twice**)
- +34715** Open axillary/subclavian artery exposure for delivery of endovascular prosthesis by infraclavicular or supraclavicular incision, unilateral (**34715 may only be reported once per side. For bilateral procedure, report 34715 twice**)
- +34716** Open axillary/subclavian artery exposure with creation of conduit for delivery of endovascular prosthesis or for establishment of cardiopulmonary bypass, by infraclavicular or supraclavicular incision, unilateral (**34716 may only be reported once per side. For bilateral procedure, report 34716 twice**)
- +34813** Placement of femoral-femoral prosthetic graft during endovascular aortic aneurysm repair (Use **34813 in conjunction with 34812**)
- 34830** Open repair of infrarenal aortic aneurysm or dissection, plus repair of associated arterial trauma, following unsuccessful endovascular repair; tube prosthesis
- 34831** Open repair of infrarenal aortic aneurysm or dissection, plus repair of associated arterial trauma, following unsuccessful endovascular repair; aorto-bi-iliac prosthesis
- 34832** Open repair of infrarenal aortic aneurysm or dissection, plus repair of associated arterial trauma, following unsuccessful endovascular repair; aorto-bifemoral prosthesis
- 37236** Transcatheter placement of an intravascular stent(s) (except lower extremity artery(s) for occlusive disease, cervical carotid, extracranial vertebral or intrathoracic carotid, intracranial, or coronary), open or percutaneous, including radiological supervision and interpretation and including all angioplasty within the same vessel, when performed; initial artery
- +37237** Transcatheter placement of an intravascular stent(s) (except lower extremity artery(s) for occlusive disease, cervical carotid, extracranial vertebral or intrathoracic carotid, intracranial, or coronary), open or percutaneous, including radiological supervision and interpretation and including all angioplasty within the same vessel, when performed; each additional artery

*This information should not be construed as authoritative. The entity billing Medicare and/or third party payers is solely responsible for codes assigned to the services and items in the medical record.

CPT© 2017 American Medical Association. All rights reserved. CPT is a registered trademark of the American Medical Association.



Cook Incorporated
 750 Daniels Way, P.O. Box 489
 Bloomington, IN 47402-0489 U.S.A.
 Phone: +1 812.339.2235, 800.468.1379, Fax: 800.554.8335
www.cookmedical.com/web/aortic-intervention